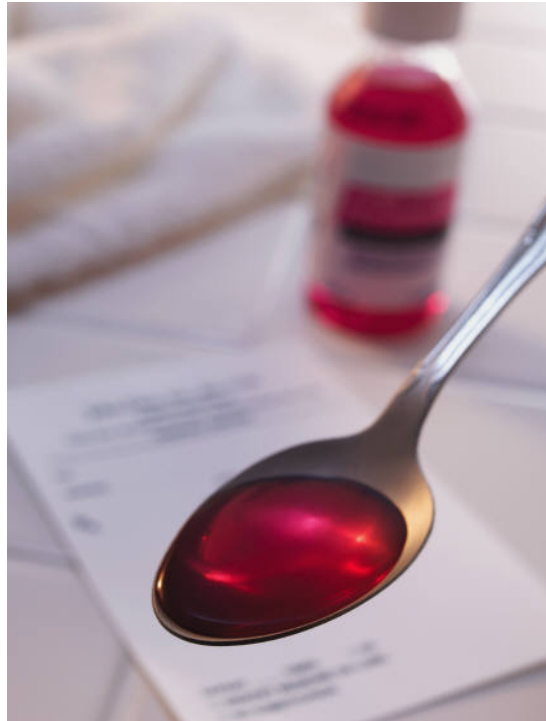
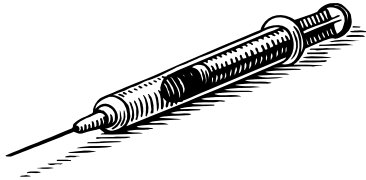


Drug Abuse





My home





FDA

- Food and Drug Administration
- Oversees the approval process of new drugs
- Monitors the use of drugs
- Responsible for promoting patient's safety
- Responsible for informing health care providers and the public
- Could withdraw drugs from the market



Classes of Drugs

- Controlled substances (CI, CII, CIII, CIV, and CIV) – classification depends on potential for addiction and abuse. CI does not have an established medical use.
- Legend drugs – physician's prescription is required.
- OTC – over the counter products
- Illegal drugs

Types of Drug

- The following products may have similar effects as drugs but are not approved by the FDA:
 - Nutritional products
 - Herbal products
 - Mexican drugs

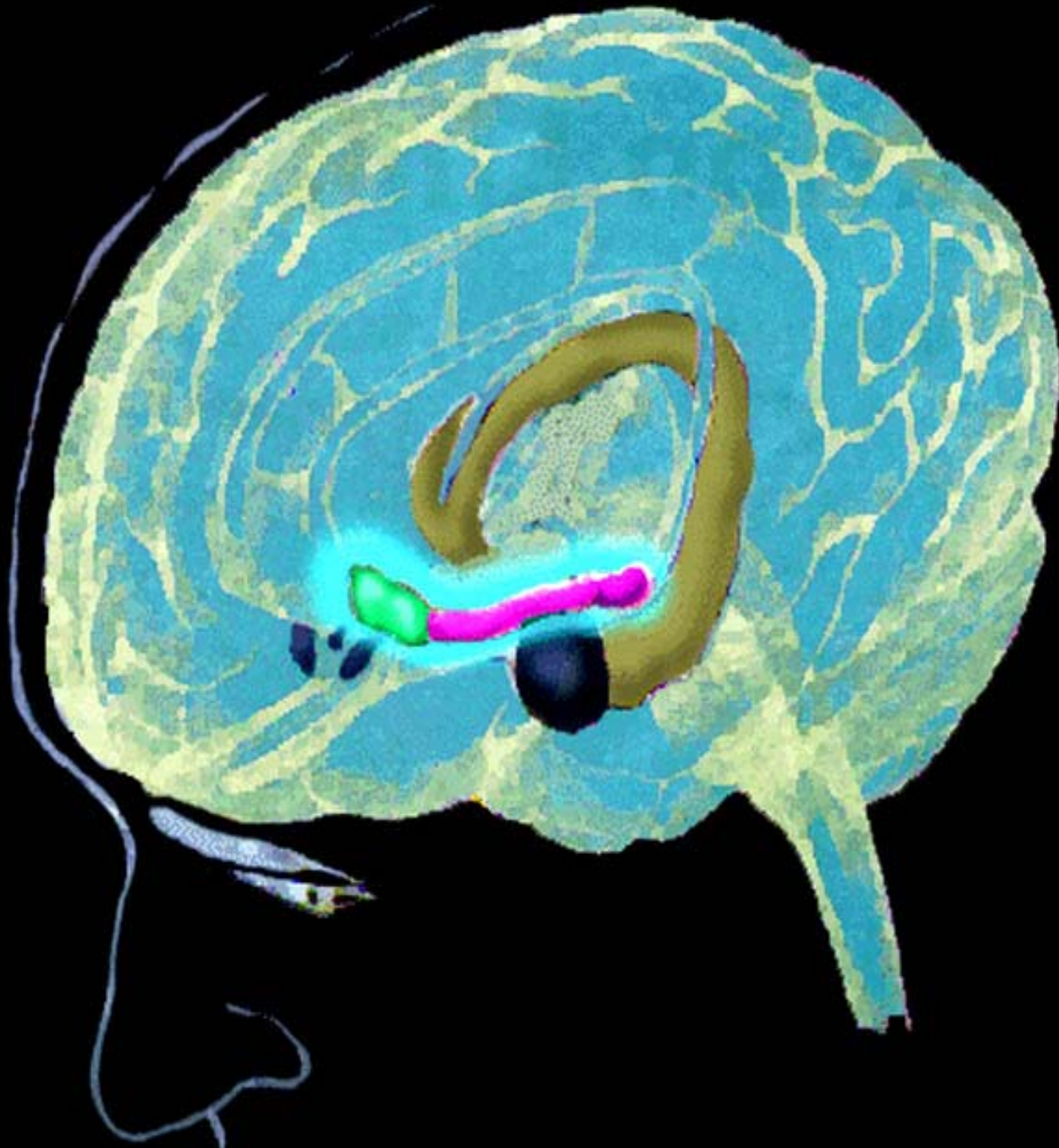


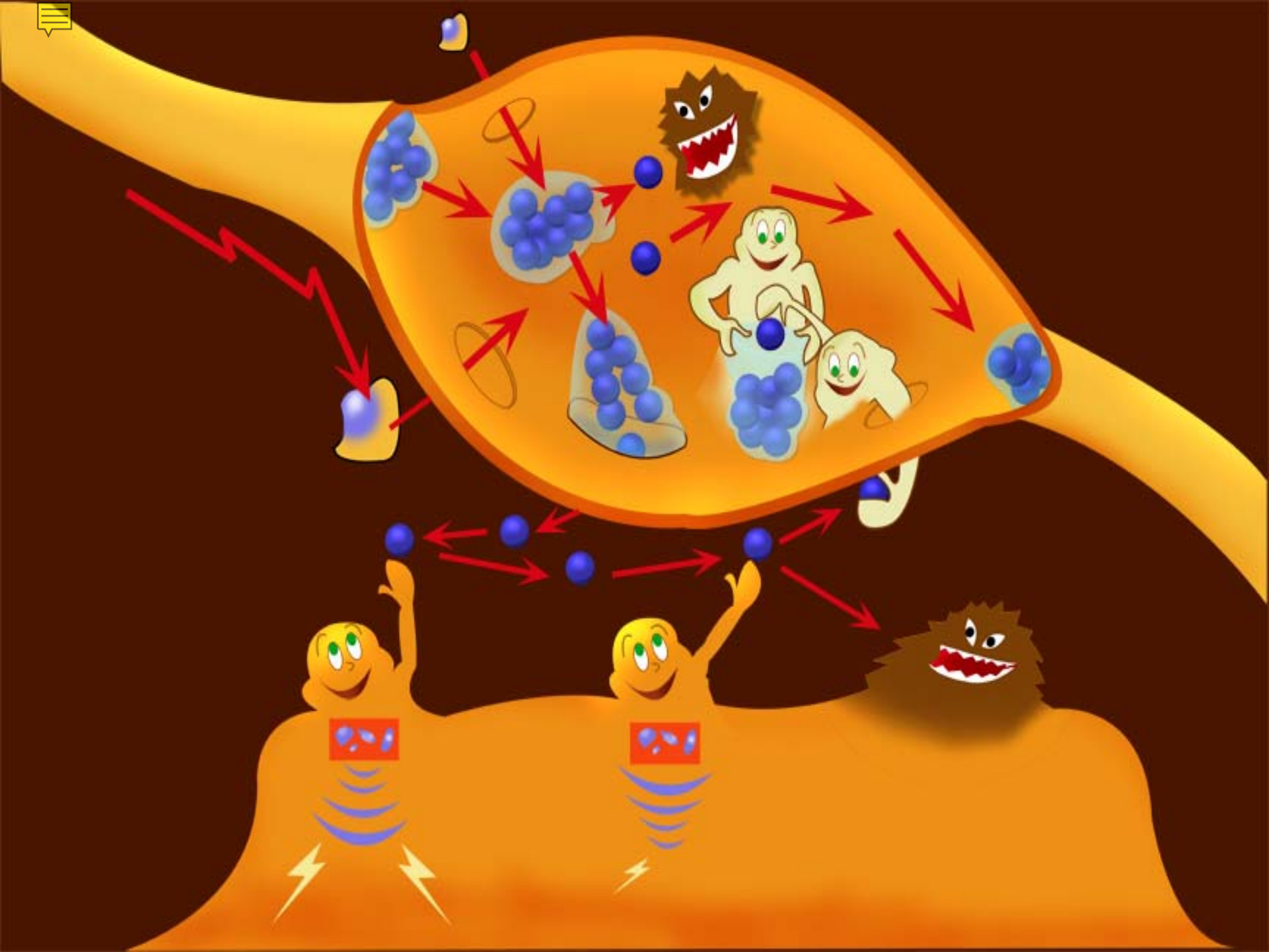
DEA

- **D**rug **E**nforcement **A**gency
 - Responsible for enforcing laws related to drug abuse
- Police
- Work
- Sports

Types of Drugs

- Medicines
 - Used for a medical reason
- Drugs of abuse
 - Used to get high





Definitions

- Habit = your mind wants the drug
- “Addiction” = the body needs the drug [medical disease of dependence]
- Tolerance = your body needs more drug to get same effect
- Withdrawal = the body and mind get sick when you stop the drug
- Overdose = too much of the drug
- Drug paraphernalia = things that are used with the drug (e.g. pipe, vial, etc.)

Drug Types

- Stimulants
- Morphine-like drugs [opioids]
- Hallucinogens
- Depressants
- Inhalants
- Steroids



Cocaine

“coke, crack,
blow, rock, snow”



- Extracted from the leaves of coca plant in South America
- It is a potent brain stimulant
- **Dangers** – people can **die**: heart attacks, strokes, and water in their lungs
- Other: depression, irritability, fatigue, paranoia and hepatitis C



Seeking the “HIGH”

Crack Cocaine



<http://www.cocaine.org/crack.jpg>



Seeking the “HIGH”



Shortly after this picture, the person posted bond on a felony charge, he accidentally overdosed with cocaine and is now

!!!DEAD!!!

www.sheriff.co.st-clair.il.us/cocaine.asp



Methamphetamine

“Meth, Speed, Chalk, Crank, Fire”



Tweakers, so-called because they can go
“ALL TWEAKEND LONG, BABY”



“Meth Mouth”

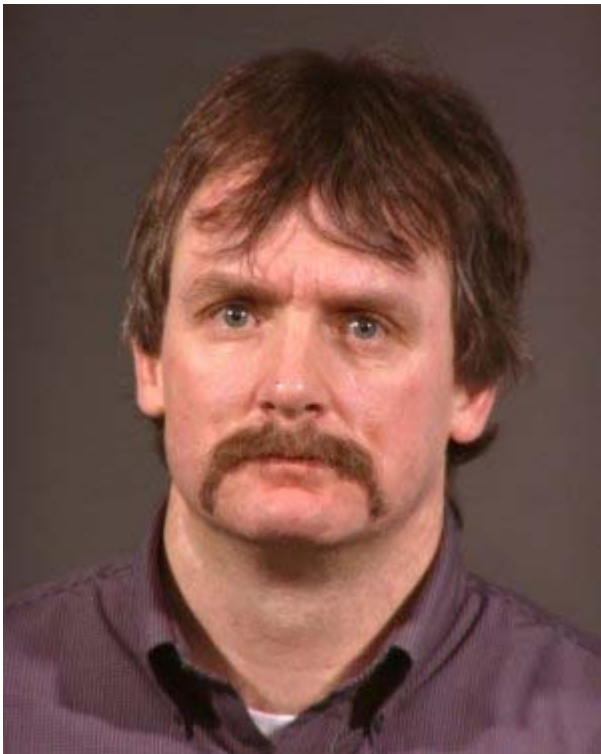


<http://images.google.com/imgres?imgurl=http://www.rotten.com>



“Meth”

BEFORE



3 Months

AFTER



ehealth4teens.org/info/meth.php

“Meth”

BEFORE



8 Months

AFTER



ehealth4teens.org/info/meth.php

“Meth”

BEFORE



18 Months

AFTER



ehealth4teens.org/info/meth.php

“Meth” (Before and After)



<http://www.neatorama.com/images/2006-04/faces-of-meth.jpg>



Crystal Meth

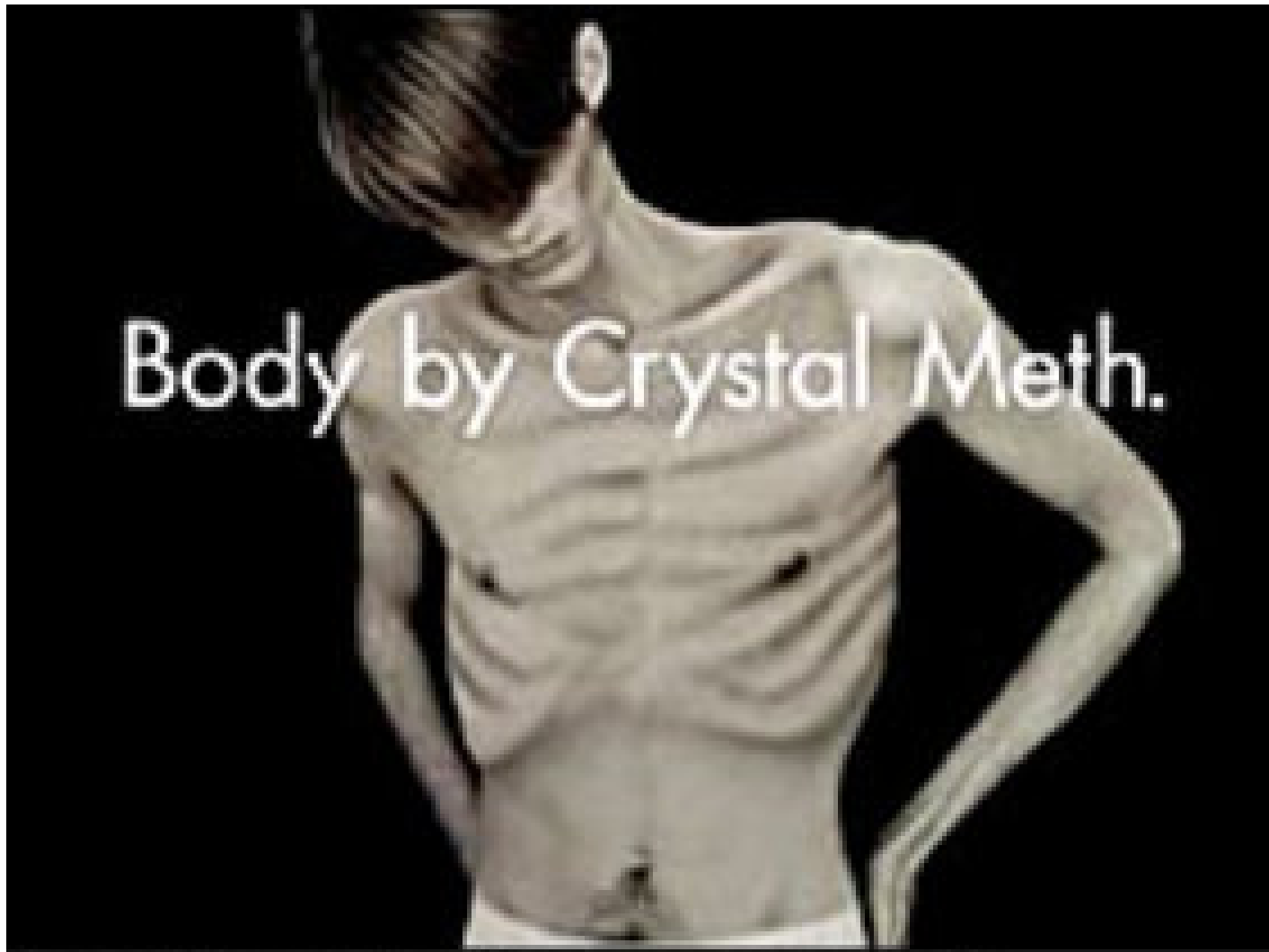
“ICE”



- **Extremely** addicting stimulant

Dangers

- Tremors and convulsions
- Increased blood pressure and irregular heart rate
- Can lead to coma, stroke or death
- **VERY toxic to nerve cells - kills them!**

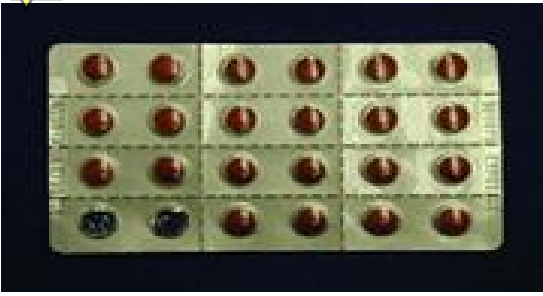


From the print ad campaign from the Partnership for a Drug Free America.

Meth Lab/Ingredients



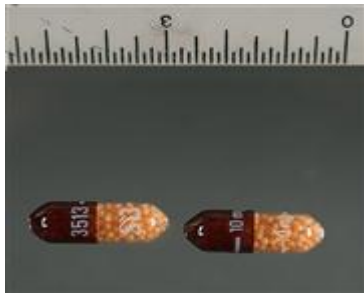
news.minnesota.publicradio.org



Pseudoephedrine

(Sudafed)

- Decongestant, may be used to treat allergies, hay fever and the common cold
- Used as a key ingredient to produce the illegal drug, methamphetamine



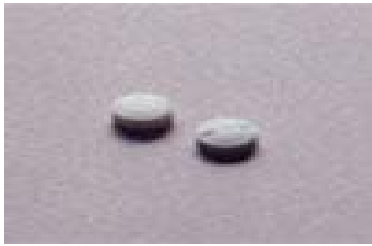
Prescription Stimulant

“Adderall, Dexedrine, Ritalin”

- Enhance brain activity, used for the treatment of ADHD

Dangers

- Increased blood pressure and heart rate that can lead to heart attacks and lethal seizures
- Hostility and paranoid



Ritalin

“kibbles and bits, pineapple”

- Used for the treatment of ADHD

Dangers

- Similar to amphetamines can increase heart rate and blood pressure
- Dependence, psychosis, withdrawal
- Paranoid, hallucinations



Tobacco

“chew, dip, fags, smoke”

- Agricultural crop
- Body responds immediately to nicotine
- One of the most addictive drugs

LONG-TERM EFFECTS OF TOBACCO SMOKING

EYES

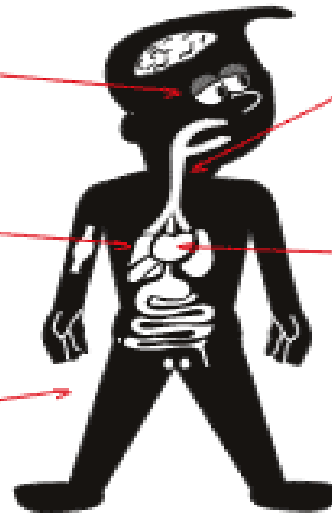
- Vision impairment

LUNGS

- Cancer
- Emphysema

SKIN

- Yellow skin
- More wrinkles (particularly around mouth)



THROAT

- Cancer
- Bad breath

HEART

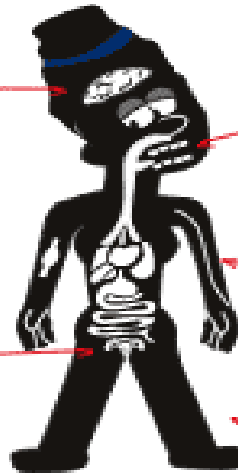
- Heart attack
- Cardiovascular disease
- Increased heart rate
- Increased blood pressure

BRAIN

- Stroke

FEMALE SEX ORGANS

- Harms unborn babies
- Increases risk of SIDS (Sudden Infant Death Syndrome)
- Low birth-weight babies



TEETH

- Gum disease
- Yellow teeth

ARTERIES

- Narrowing of arteries
- High cholesterol

LEGS

- Arterial disease (could lead to amputation)

LUNGS



Healthy



Cancer



Salvia

“shepherdess’s, ska pastora”

- Psychoactive mint that was used by traditional healers in Mexico

Dangers

- Possession is now illegal in U.S.
- Can cause hallucinations (seeing and hearing things that aren't there) that can be frightening



Peyote

“buttons, cactus, mesc.”



- Is a small spineless cactus
- A hallucinogen that has been used by native Americans as part of religious rites

Dangers

- Nausea, altered states of perception and feelings
- Increased body temperature, heart rate, and blood pressure
- Flashbacks **[like LSD]**



LSD

“acid, doses, microdots, trips”

- Manufactured from lysergic acid which is produced by a fungus
- A very potent hallucinogen

Dangers

- The effect is unpredictable and depends on the amount taken the user’s personality, mood, and surroundings
- Increased body temperature, blood pressure
- Flashbacks, panic



Marijuana

“dope, grass, pot,
reefer, weed, nails”



- The most often used illegal drug

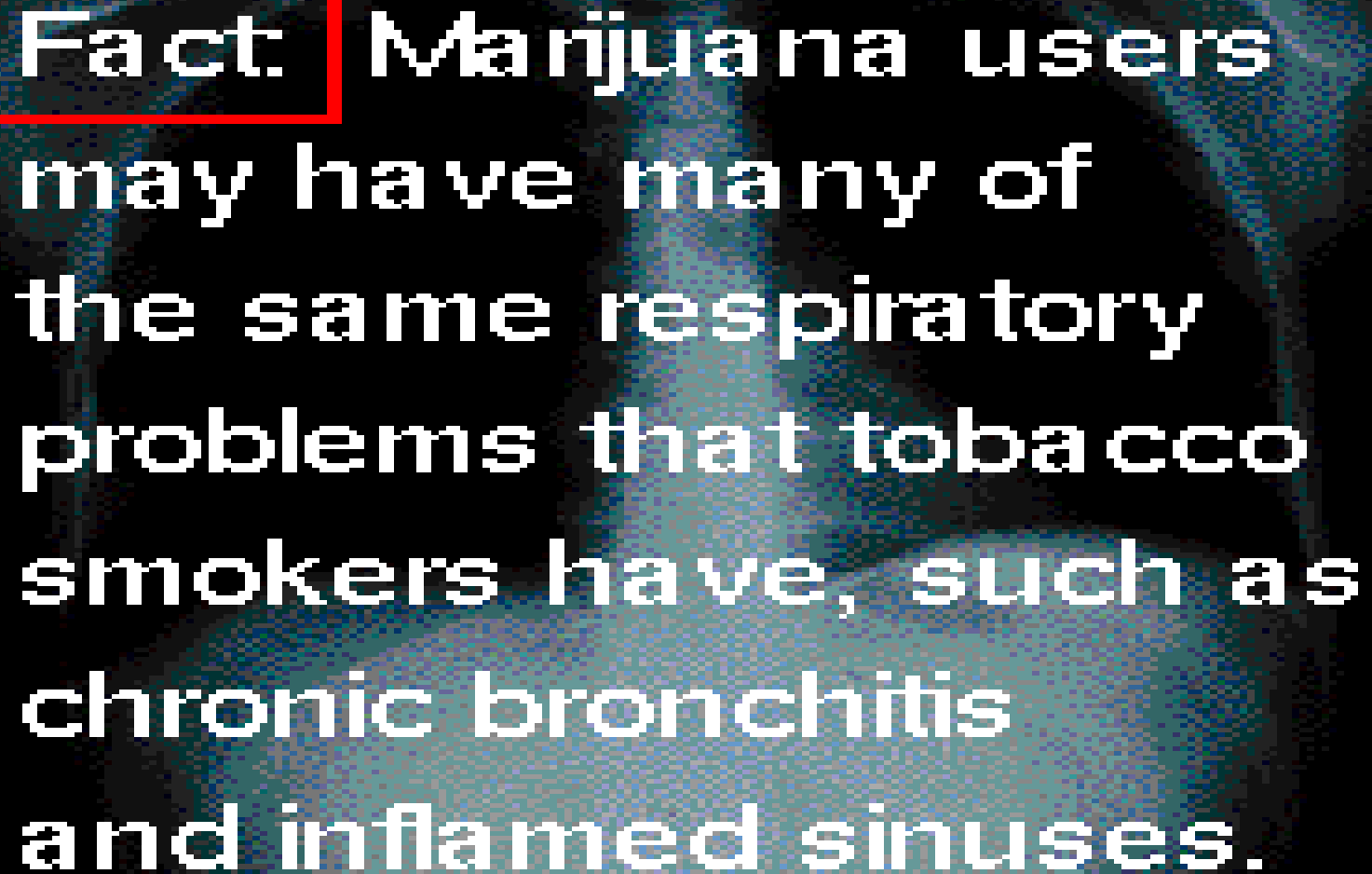
Dangers

- Problems with memory and learning
- Distorted perception, increased heart rate, and anxiety
- Contains same cancer-causing compounds as cigarettes.



Q: How many teens smoke marijuana?

- **A:** Contrary to popular belief, most teenagers do not use marijuana. Among students surveyed in a yearly national survey, only about one in six 10th graders report they are current marijuana users (*that is, used marijuana within the past month*). Fewer than one in four high school seniors is a current marijuana user



Fact: Marijuana users may have many of the same respiratory problems that tobacco smokers have, such as chronic bronchitis and inflamed sinuses.

<http://www.nida.nih.gov/MarijBroch/Marijteens.html>



Heroin

“blacktar, junk, smack”



- Obtained from opium poppy plant
- Has a depressive effect

Dangers

- Other effects: impaired vision, vomiting and constipation
- Highly addictive, can cause breathing problems that can lead to death
- Will cause severe withdrawal reactions
- Use of needles increases risk for HIV

Heroin Addiction





Oxycontin

“killers, OC, oxy, oxycotton”

- Prescription drug used mostly for severe pain, including cancer pain

Dangers

- Can cause breathing problems that could lead to death
- Can also cause withdrawal symptoms when stopped suddenly
- **Acts much like heroin**



Prescription Pain Relievers

“codeine, Oxycontin, Percocet, Vicodin”

- Narcotics (opioids) used to treat severe pain

Dangers

- Drowsiness, constipation and slowed breathing
- High doses can stop breathing and lead to death
- Physical addiction, tolerance, and withdrawal
- **Act much like heroin**



Alcohol

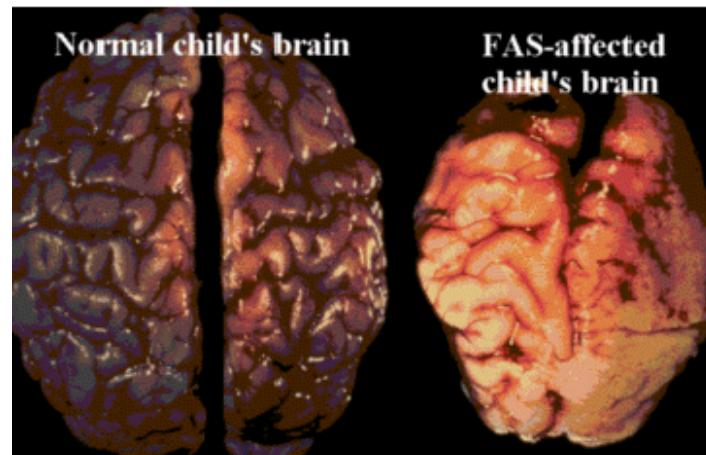
“booze”



- Depressant, even though it seems to lift one’s spirits
- Legal drinking age is 21 years

Dangers

- Alcohol poisoning: one time can be deadly
- Heavy use can lead to addiction and withdrawal
- Can have permanent damage to brain and liver and harm unborn babies



Types of alcoholic drinks

- Beer
- Wine
- Hard liquor
 - Tequila
 - Rum
 - Whisky
- Champagne
- Wine coolers

Definitions

- **Alcohol poisoning**:
- A condition in which a toxic amount of alcohol (ethanol, ethyl alcohol) has been consumed, usually in a short period of time.
 - The toxicity is related to the blood level of the alcohol.
 - The individual may become extremely disoriented, unresponsive or unconscious, with shallow breathing.
 - Because alcohol poisoning can be fatal, emergency treatment is urgently needed.
- **Alcoholism**: A medical disease in which a person cannot control his / her drinking behavior [regardless of the amount consumed].

Alcohol Blood Levels

- **Legal limit:** less than 80mg/dL (0.8%)
- Between 20-30mg/dL (0.2-0.3%) behavioral, psychomotor and cognitive changes can be seen
- **Death:** between 300-400mg/dL (3-4%)

Statistics

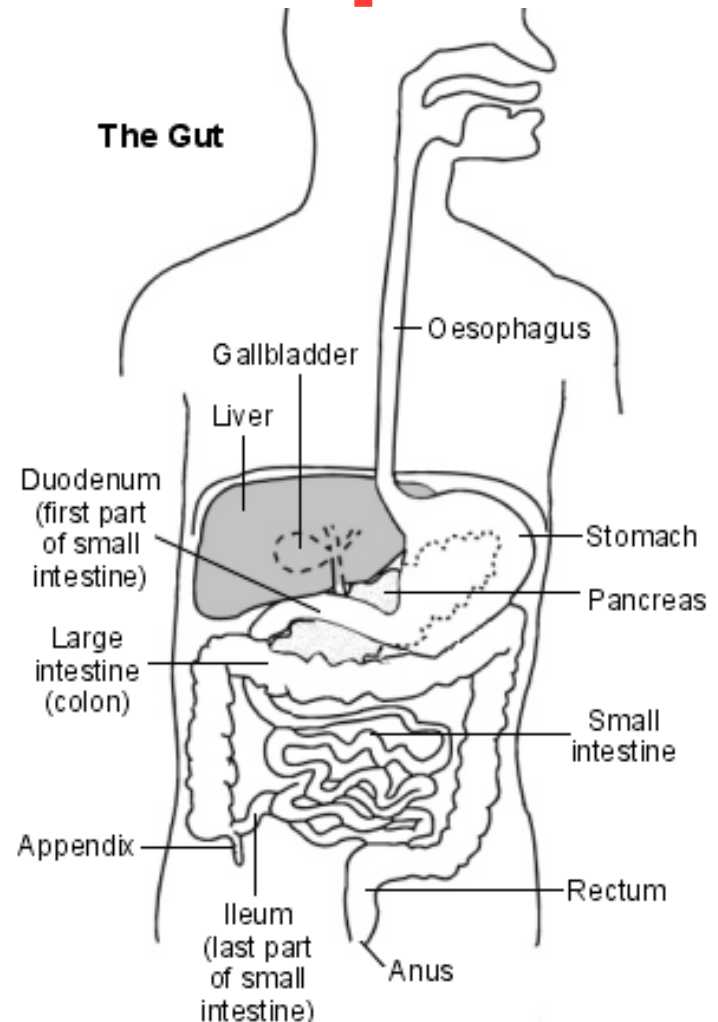
- Alcohol-induced problems in 40-50% of male drinkers
- Alcoholism
 - 10-20% of male drinkers
 - 3-10% of female drinkers
- MVA [motor vehicle accidents]
 - 40-50% positive for alcohol and or drugs



GIT

[Gastrointestinal tract]

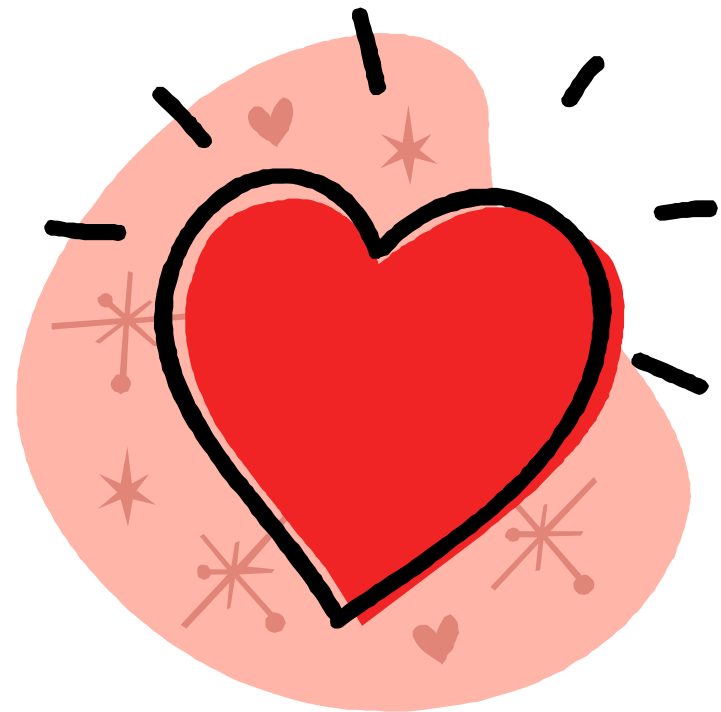
- Inflammation of the esophagus
- Inflammation of the stomach
- Small bowel problems
- Damage to the pancreas
- Damage to the liver



CV

[cardiovascular system]

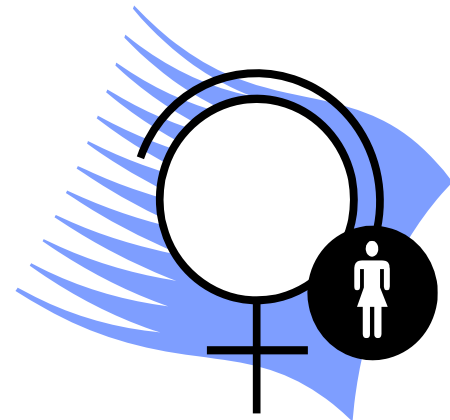
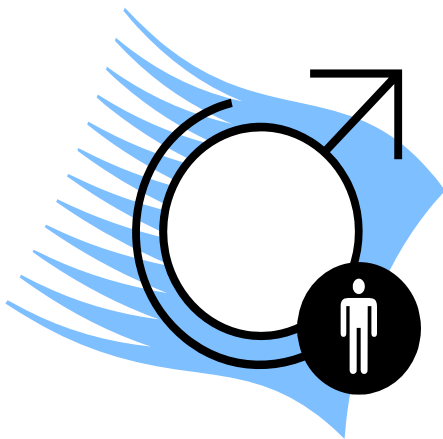
- Low doses may have some benefits in adults
- Heavy use
 - Increase blood pressure
 - Cardiomyopathy [weak heart muscle]
 - Cerebrovascular accidents [stroke] (within 24 hours of heavy drinking)



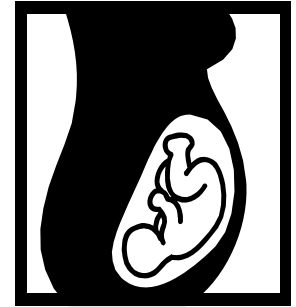
GU

[genitourinary]

- Small doses – increase sexual drive in males
[but it almost always worsens performance]
- Moderate doses – decrease erectile capacity
- High doses in women may cause hormonal changes



Others

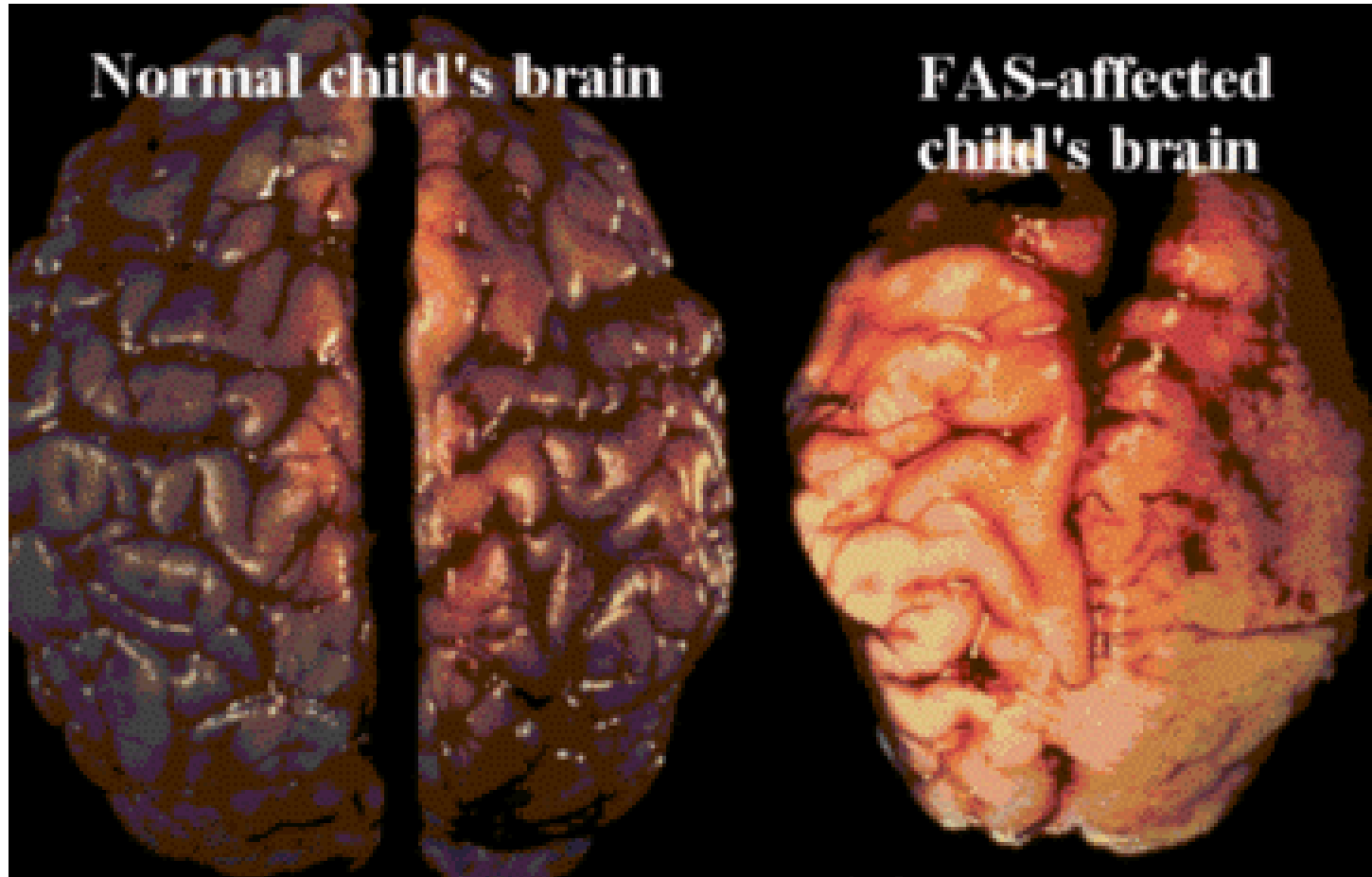


- Fetal alcohol syndrome [FAS]
 - Abnormal facial, dental and cardiac defects
 - Mental retardation



- Alcohol myopathy [muscle weakness]

FAS Brain



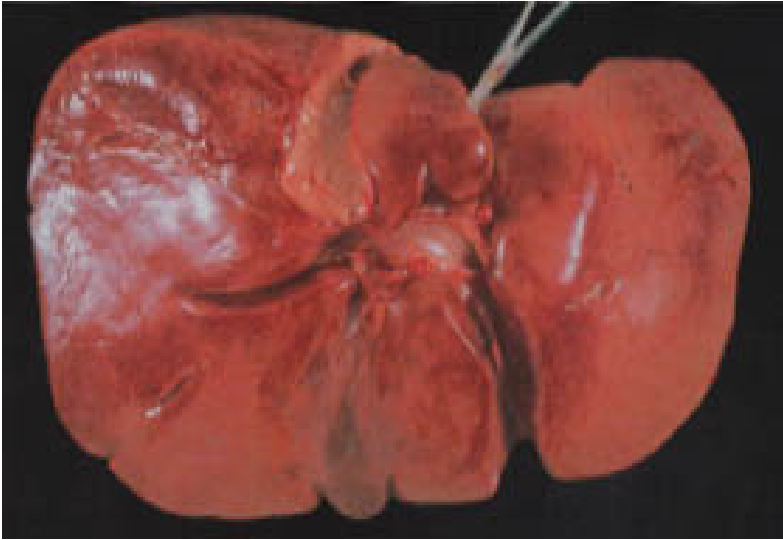
Liver

- Alcoholic liver disease and cirrhosis
 - Alcoholic fatty liver
 - Alcoholic hepatitis
 - Alcoholic cirrhosis
- Jaundice
- Ascites
- Encephalopathy
- Coagulopathy (bleeding)
- Bacterial peritonitis
- Hepatorenal syndrome





LIVER



Healthy Liver

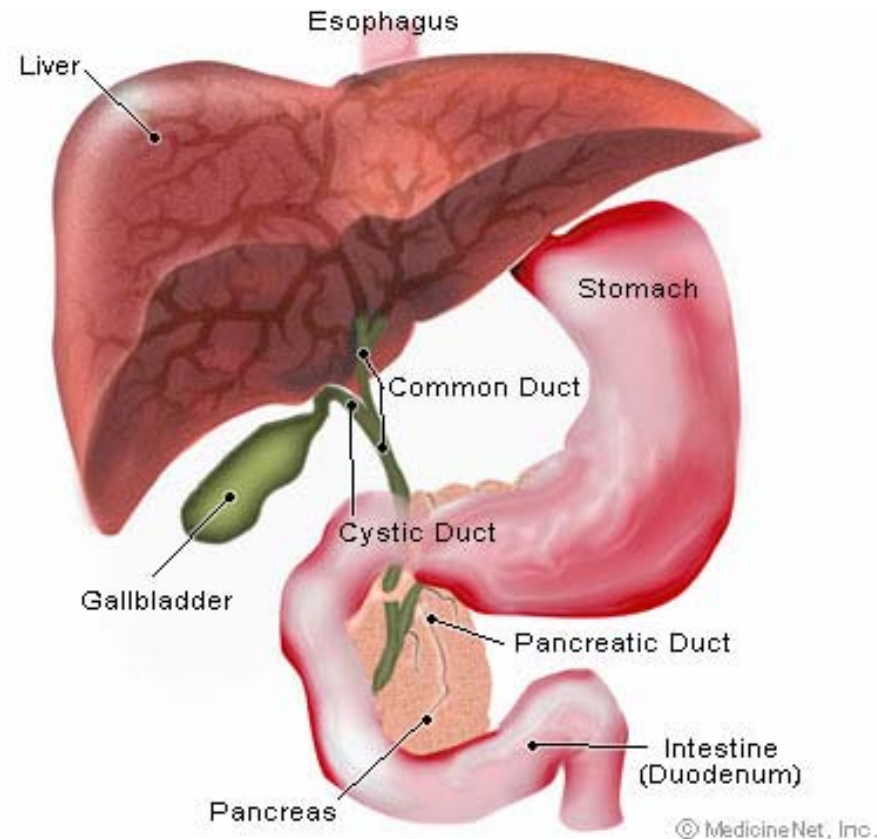


Hepatitis Liver

You cannot live without a liver !

Pancreas

- Changes in gastric acid production
- Water and electrolytes imbalances
- Changes in pancreatic enzyme production
- Decrease insulin production



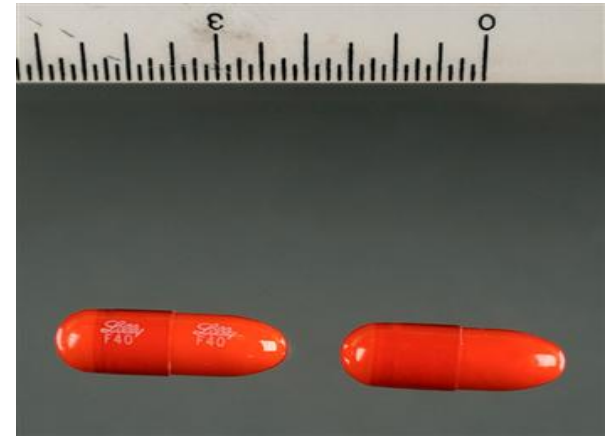
Prescription Sedatives

“Quaaludes, Xanax, Valium”

- Produce depression

Dangers

- Slowed brain function, fatigue, lack of coordination
- High doses can cause irritability, paranoid, and suicidal thoughts
- Addiction, tolerance, and withdrawal
- **These are like solid alcohol**



Cough Medicine

“Dex, DXM, Robo, Skittles, Syrup, Tussin”



- Common cough medicine (usually safe)

Dangers

- Severe vomiting sometimes with blood
- Increased heart rate and possible heart attacks
- Severe muscle spasms



Inhalants

“Huffing”

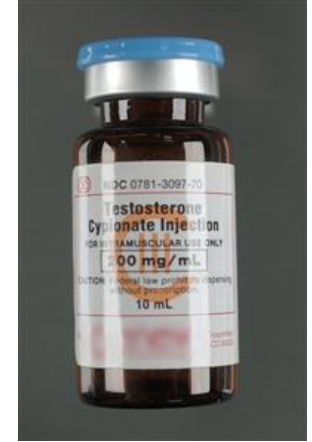
- Ordinary household products
- **May make you delirious**
- May cause hallucinations and delusions

Dangers

- Disorientation, irritability and depression
- Heavy abuse may cause loss of consciousness and death
- **VERY toxic to nerve cells [kills them]**



Steroids



- Different types: anabolic steroids
- Closely related to the sex hormone, testosterone
- Some athletes may claim that steroids give them a competitive advantage

Dangers

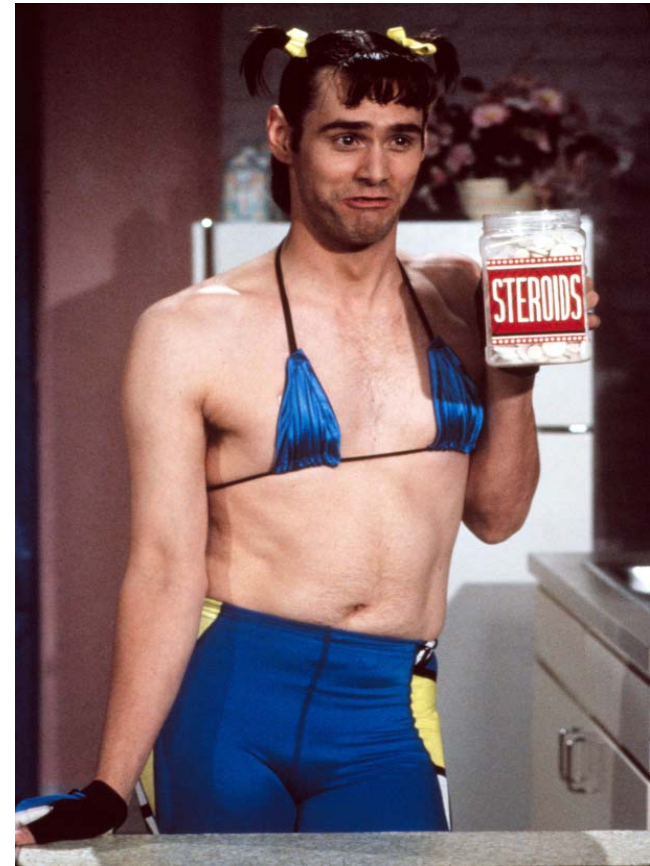
- Liver tumors, high blood pressure
- External effects:
 - **Guys**: shrinking testicles, development of breasts
 - **Gals**: facial hair growth and deepening of voice, in addition to mental changes



Steroids – Side Effects



Steroid Acne

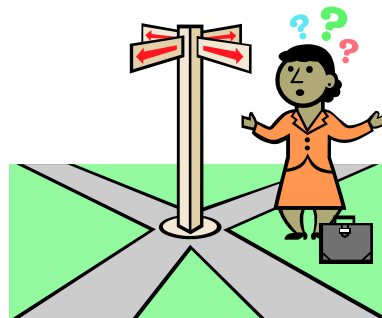


Feminism

Good Decisions



- Drug abuse is a choice
- Educate yourself
- Use a good source of information to learn about drug abuse
 - www.drugfree.org
- The best treatment for drug addiction is prevention



Learn to be Happy



Without Drugs!

- **Friends**
- **Family**
- **Community
service**